

SharePoint 2010 Evaluation Guide for IT Pros

Eric Ku
iTrain Malaysia



About me

- Eric Ku, MCT, MVP
- Consultant Trainer & COO
iTrain Malaysia – KL & Penang
- <http://www.ericku.com>
- eric@itrain.com.my

“SharePoint”

- **SharePoint Team Services**
- **SharePoint Portal Server 2001**
- **Windows SharePoint Services 2.0**
- **Microsoft SharePoint Portal Server 2003**
- **Windows SharePoint Services 3.0**
- **Microsoft Office SharePoint Server 2007**

And now in 2010

 Microsoft®
SharePoint® Foundation 2010

 Microsoft®
SharePoint® Server 2010

Get Trained and Certified with Microsoft Official Curriculum (Availability June 2010)

With SharePoint 2010, Two new certifications and related courseware will be introduced for IT Pros:

– **TECHNOLOGY SPECIALIST: CONFIGURING SHAREPOINT 2010 (70-667)**



With the training courses of this MCTS certification, IT Professionals can learn configuration skills for SharePoint, including deployment, upgrade, management and operation on a server farm.



– **IT PROFESSIONAL: ADMINISTRATING SHAREPOINT 2010 (70-668)**

The training courses of this MCITP certification cover advanced SharePoint 2010 topics like capacity planning, topology designing and performance tuning.

– **Also, the Microsoft Certified Master certification will be available for SharePoint Server 2010.**

To achieve Microsoft Certified Master certification, candidates must attend the training program and successfully complete three weekly exams and a qualifying lab exam.

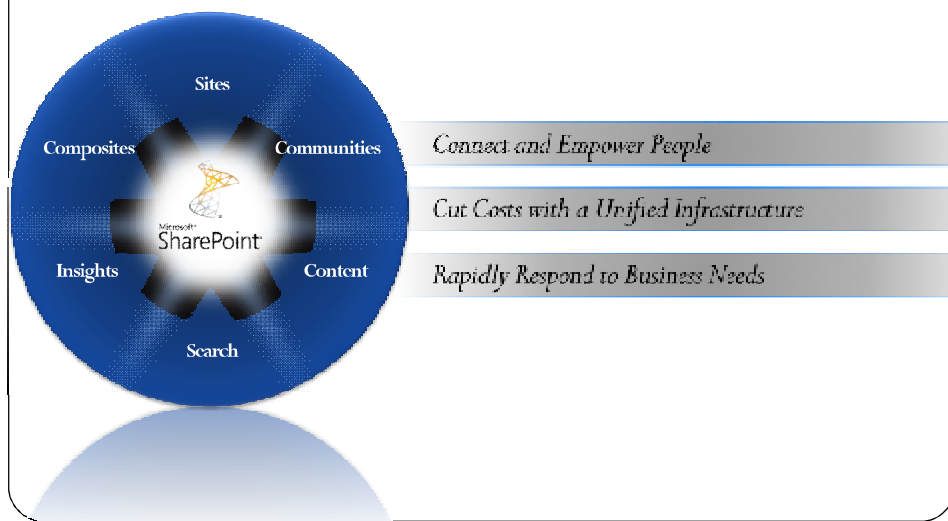
What is IT Pros Main Concern?

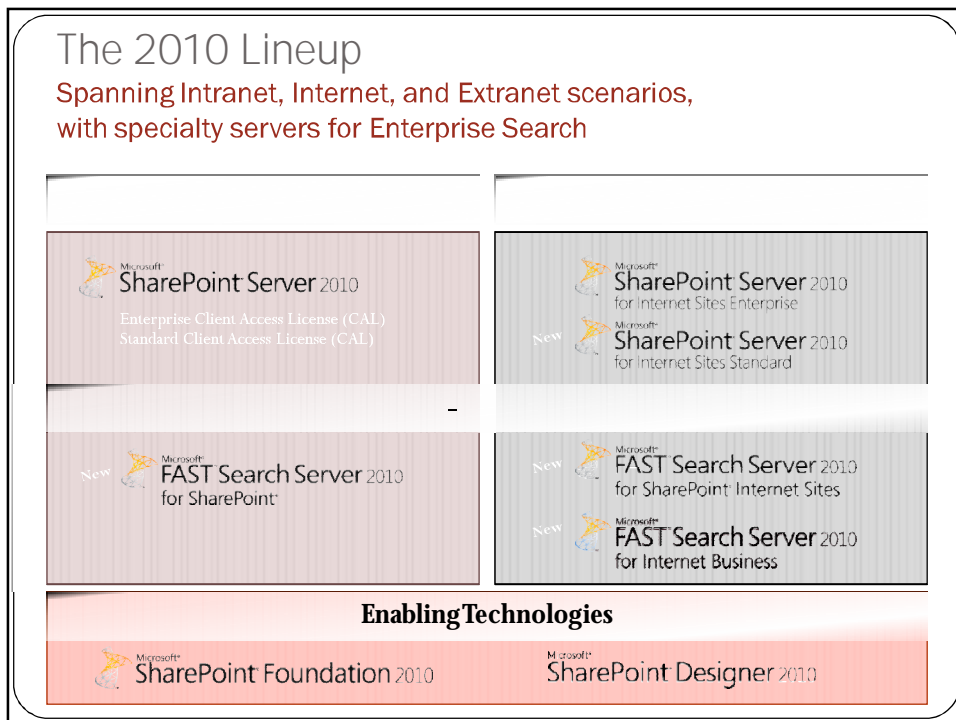
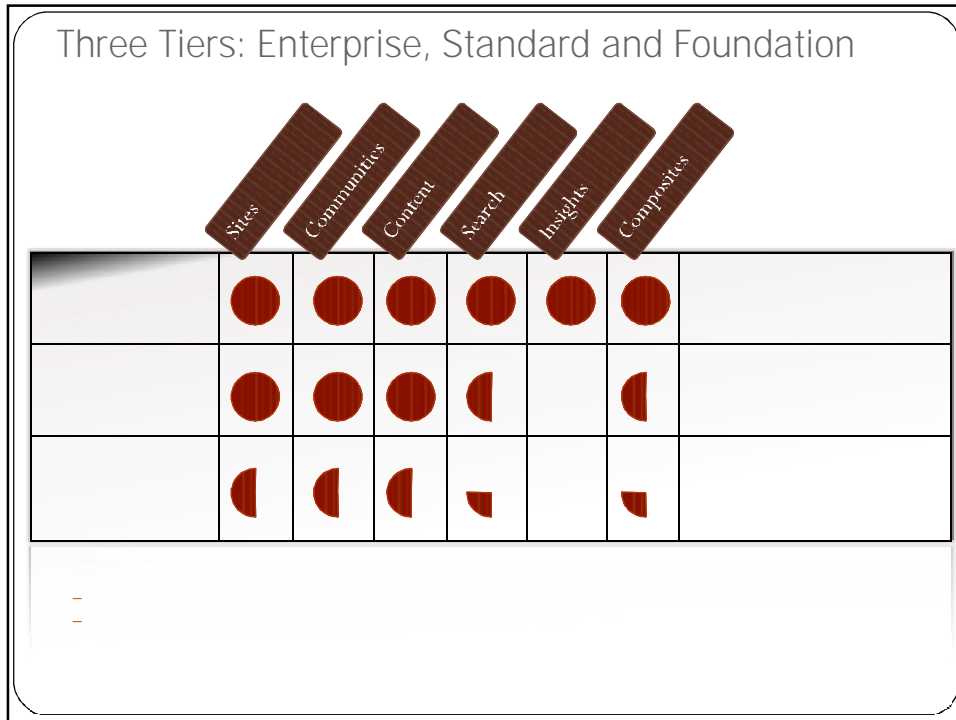
System Requirements

- OS requirements for SharePoint 2010
 - Windows Server® 2008 SP2 or later
 - Windows Server® 2008 R2
 - Must be 64 bit
- SQL requirements
 - SQL Server 2005 SP2 or later
 - SQL Server 2008 SP1 or later
 - Must be 64 bit

Microsoft SharePoint 2010

The business collaboration platform for the enterprise and the web

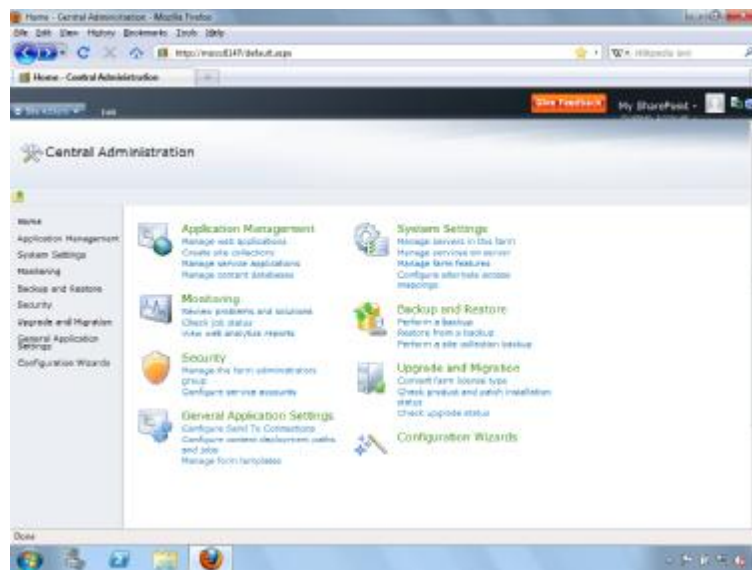




What's New

- **IT Pro Productivity**
 - Deeper operational insight
 - New, streamlined Central Administration Web Site
 - Windows PowerShell Support
- **Scalable Unified Infrastructure**
 - Better control over server resources
 - Data management and protection
- **Flexible Deployment**
 - Quick and simple installation and configuration process
 - Smooth and predictable upgrade

Central Administration Web Site



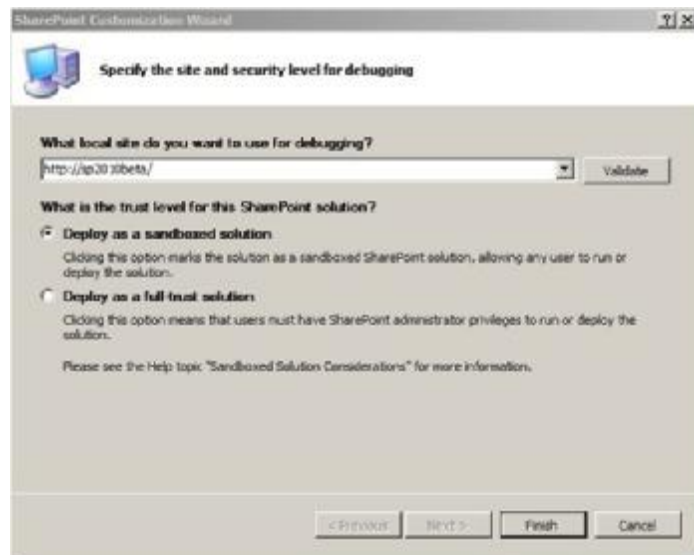
IT pro productivity

- **SharePoint Best Practices Analyzer**
- **Backup and restore configuration data**
- **Site collection migration**
- **Content recovery down to the site and list level**
- **Content restore of site or list**
- **Windows PowerShell™ snap-ins and commands**

Scalable unified infrastructure

- **Shared service applications**
- **Hosting and multi-tenancy architecture with site subscriptions**
- **Claims-based authentication**
- **Profile synchronization**
- **High availability automatic failover**
- **Content type syndication**
- **Sandbox solutions**

Sandbox solutions



Flexible deployment

- Prerequisite installer
- Visual Upgrade
- Configuration wizards
- Scriptable deployment
- On-premise or online

Prerequisite installer



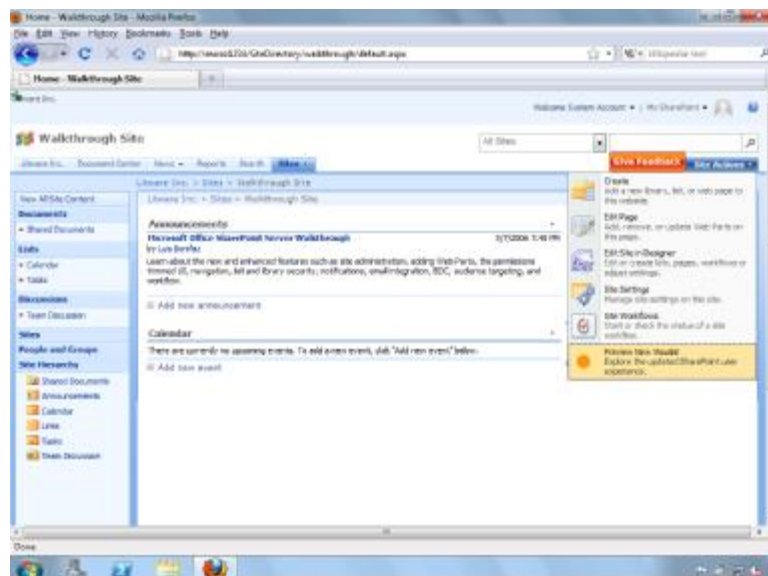
Prerequisite installer



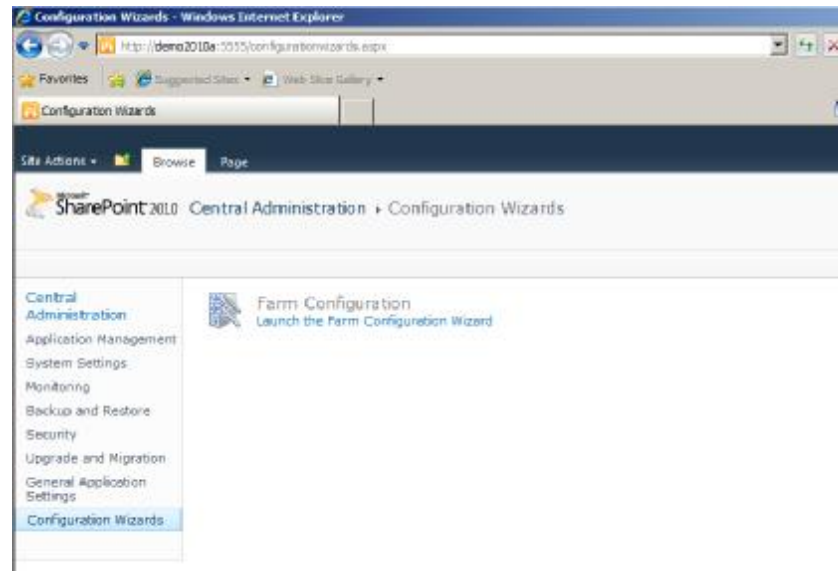
Visual Upgrade



Visual Upgrade



Configuration wizards



Preparing for Upgrade

- **Stsadm -o preupgradecheck**
 - Need Office SharePoint Server 2007 SP2
 - Report on farm and server data
 - Servers and total amount of content
 - Search configuration
 - Alternate access mappings
 - Features
 - Site Definitions
 - Language Packs
 - Will also expose potential issue
 - Large lists
 - Data orphans
 - CAML views and CAML content types
 - Modified content databases that have improper schemas
 - Missing upgrade dependencies